



# Royal Chair

New product

Italian minimalism style









"Less is more" , is the essence of Italian minimalism .  
Italian minimalism style is in search for innovation, the  
beauty and richness of life.

Royal-053 demonstrates the unique maturity and  
modern elegance of Italian style. For an executive  
manager who pursues excellence and cares about the  
aesthetics of the workplace, this is "The Choice" .

High-quality leather and fine details highlight the  
prestige and taste of the seating.











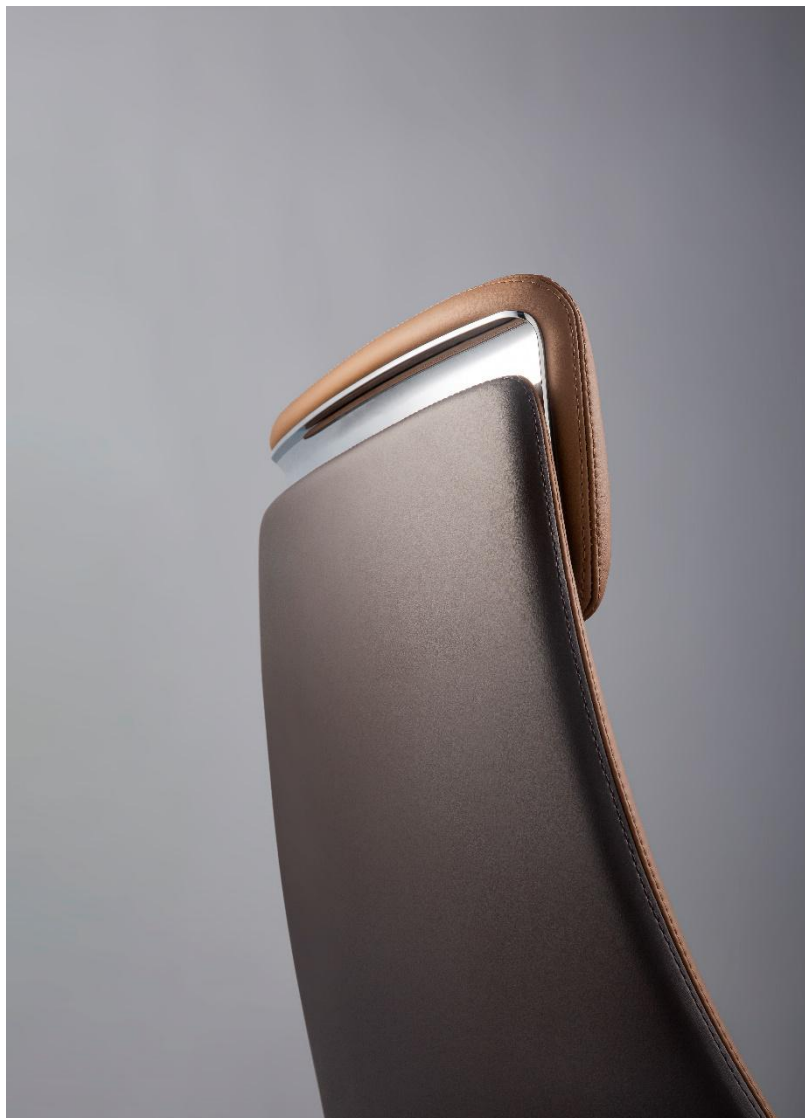














### Height adjustable headrest

Height stroke: 30mm,  
Adapt to different heights.

### Italy Imported Leather

Adopted the first layer of cowhide, Selects imported leather embryo, Durable and breathable.

### Steel frame backrest

The backrest adopted full steel frame which effectively increases the service life / load bearing and stability of the seating

### Aluminum decoration on the back

Aluminum die-casting electroplating molded decoration,Creates different textures and enhance modern look.

### Long lasting seat

High resilience & density foam  
Durable and delivers great seating comfort.

### South Korea imported level 4 gas-lift

Safe and explosion-proof

### Synchron mechanism

107° back tilt, 5 locking positions ,  
Max.bearing120KG。

### Aluminum base

350mm aluminum base, anti-oxidation, corrosion resistance, strong load-bearing and safe.

### PU Casters

Silent , smooth and durable



## Product Display





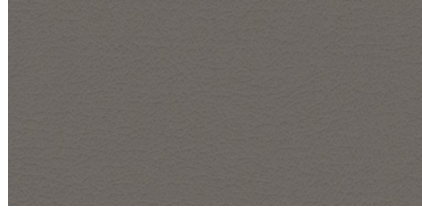
## Color options

Imported leather from Italy, Clear texture, durable, breathable and comfortable.

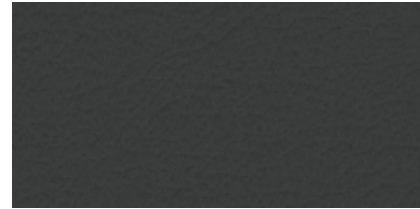
### Interior



PW8615#Light brown

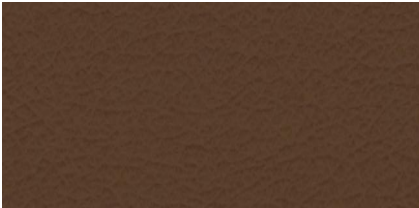


PW906#Light Grey



PW8628#Grey

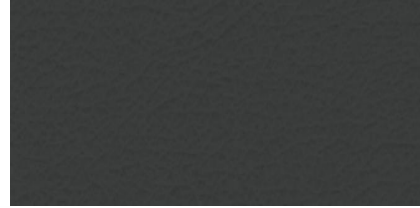
### Exterior



K61-2 Light brown

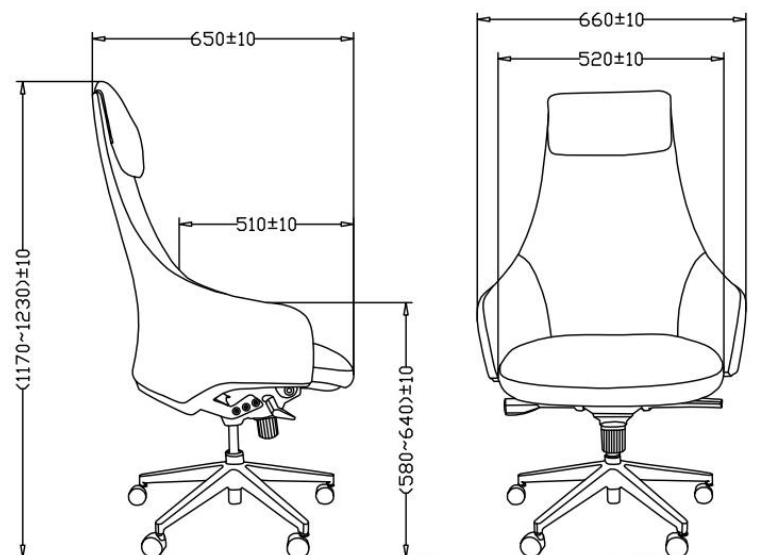


K61-4Dark Brown



K61-3 Grey

## Size & Weight

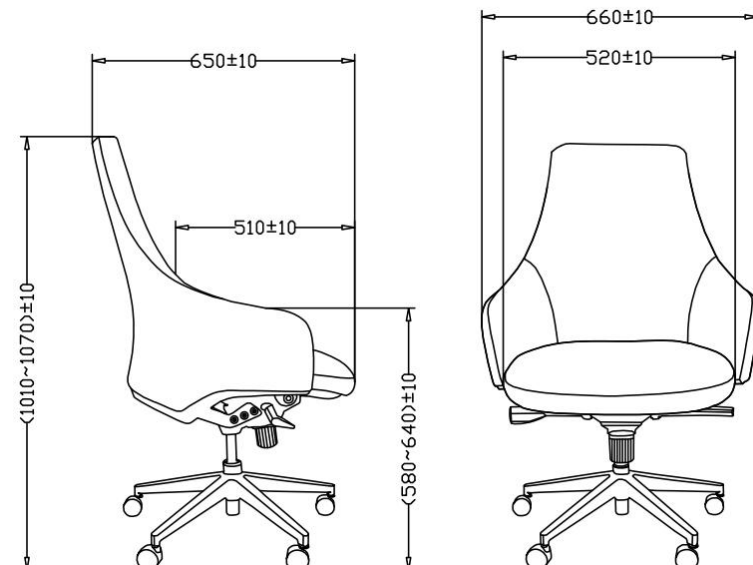


**Carton Size:** 40"L\*27-1/2"W\*27-1/2"H CBM:0.49

**Packing:** 1pcs per carton

**N.W.:** 23.0KG **G.W:** 26.8KG

20GP: 40HQ:



**Carton Size:** 34-1/4"L\*27-1/2"W\*27-1/2"H CBM:0.43

**Packing:** 1pcs per carton

**N.W.:** 20.0KG **G.W:** 23.3KG

20GP: 40HQ:





# CONTACT US

---

## B.one Industrial Park

Factory: No.1,3 Youyi Road, Tangxia Town, Dongguan, Guangdong, China  
Tel: +86-769-8685 5575 Fax: +86-769-8685 6603

---

## Global Operations Office

A2101, Xintian CBC, Shixia North Road II, Futian District, Shenzhen, China  
Tel: +86-755-8282 8666 Fax: +86-755-8371 7161

---

[www.cjfurniture.com.cn](http://www.cjfurniture.com.cn)

