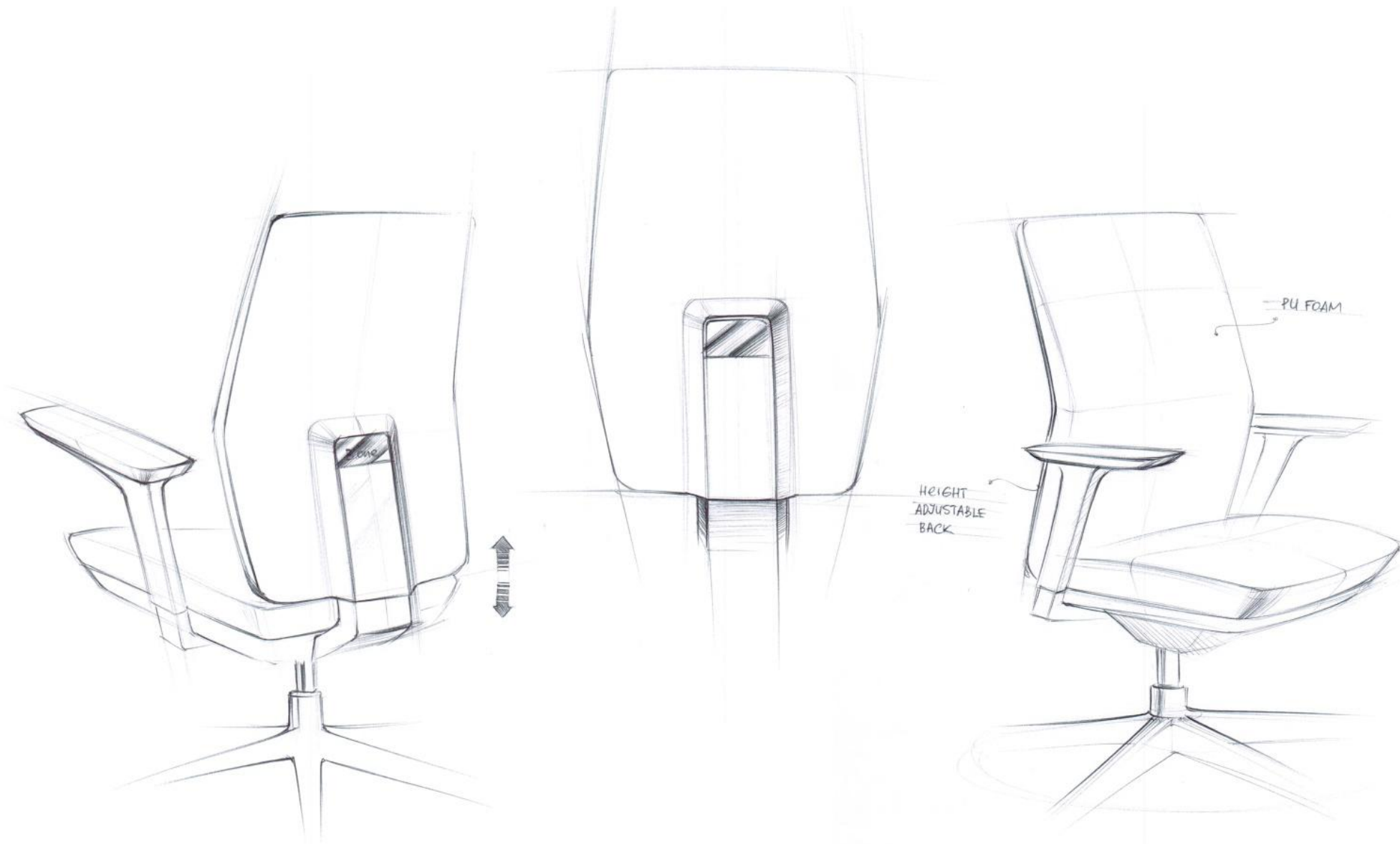


BE CHAIR

D00318





Touho FR

Claudio Francesco Bellini (1963) is living and working in Milan, where he graduated in Architecture and Industrial design at the renowned Politecnico university in 1990.

His strong fascination with creativity, is rooted in his early childhood years, inspired by his father Mario Bellini, whom counts as one of the most affluent figures in design history.

Today Claudio Bellini Design, recognized as one of the most influential European studios, is active within several fields of design, ranging from furniture to product and architecture, collaborating with leading companies worldwide including Walter Knoll; Steelcase; Poltrona Frau; Riva 1920. Many of its creations have received international design awards, among which the prestigious Red Dot, IF and Good design award.



Claudio Francesco Bellini (Italy)

Be Chair

Be Chair comes with choices of fabric version and PU Leather version. It's soft and resilient, design with outstanding ergonomics and highly tactile materials. All the details are here: a very concise style, height-adjustable backrest, high resilience soft pad, 3D armrest with soft arm cap, soft-touch leather, abrasive and breathable fabric, a variety of bases and colors. Be Chair brings you ultimate comfort and flexible solutions.



High Back / D00318 Series



D00318RMF



D00318RMF



D00318SMP



D00318SMF



D00318SMP

Mini Back / D00318S Series



D00318TWF



D00318RMF



D00318JSF



D00318EFF

For various scenarios





FEATURES
HIGHLIGHT

Hight Adjustable
Headrest

Hight Adjustable
Backrest

3D Armrest

Seat Hight Adjustment
Choose Slider,Seat Depth
Adjustment



Width and Depth
Adjustable (Arm Pad)

Hight Adjustable
(Armrest)

Aluminum Armrest
Nylon Armrest

Recline Angle Limiter

Aluminum Base
Nylon Base

Adjustable Headrest

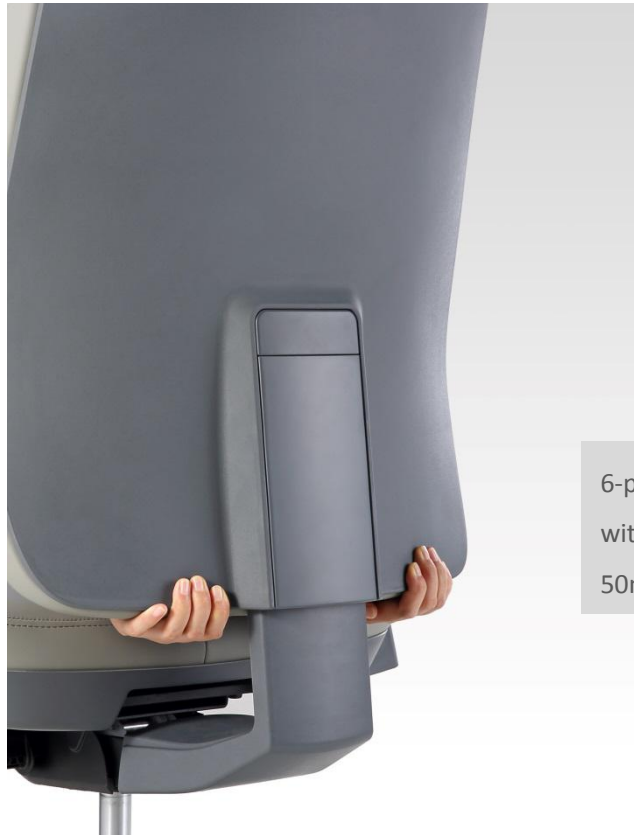
The wide headrest design not only provided the comfort support for your head but also made the chair look more high end and elegant. The various colors of PU and fabric are offered to fit different user's application.

- The headrest adopted molded foam of 30mm thickness with density 65
- 5-position height adjustment with effective stroke of 30mm
- California fire retardant standard grade form



Ergonomic Support

Everyone is different. The backrest of Be Chair is height adjustable, enabling you to lift it up or down to the right position. With a generous height adjustable range, Be Chair can comfortably fit more people.



6-position lock
with a range of
50mm





Synchronised Tilt

The limiter that allows you to limit the recline angle within 22 degrees, the three-position lock that stops the backrest at three different angles. The tilting tension is adjusted by the knob under the seat.





DONATI-DOPO Weight Sensitive Mechanism Plus Seat Slider

It's always about choice with Be Chair: you can choose a weight sensitive mechanism whose tilting tension responds automatically to your body weight, adapting to fit you. Adjustments are made easy with a use-friendly lever control.



Seat height adjustment



Seat depth adjustment



Recline angle limiter



Super Slider

6-position Seat Slides is attachable to two version mechanisms of Be Chair. Press the handle and move the seat backwards or forwards to adjust the preferred position for even more comfort.

Desired Comfort

The waterfall edge is a contoured foam seat cushion that eases pressure beneath your thighs and maintains healthy blood flow to your legs.



High Tactile Materials

The PU leather lends charm to Be Chair, adding an aristocratic temperament to the whole chair and releasing a perfect and classic feeling to your room. Fabric upholstery brings more affinity and user-friendly.





Active Armrest Support

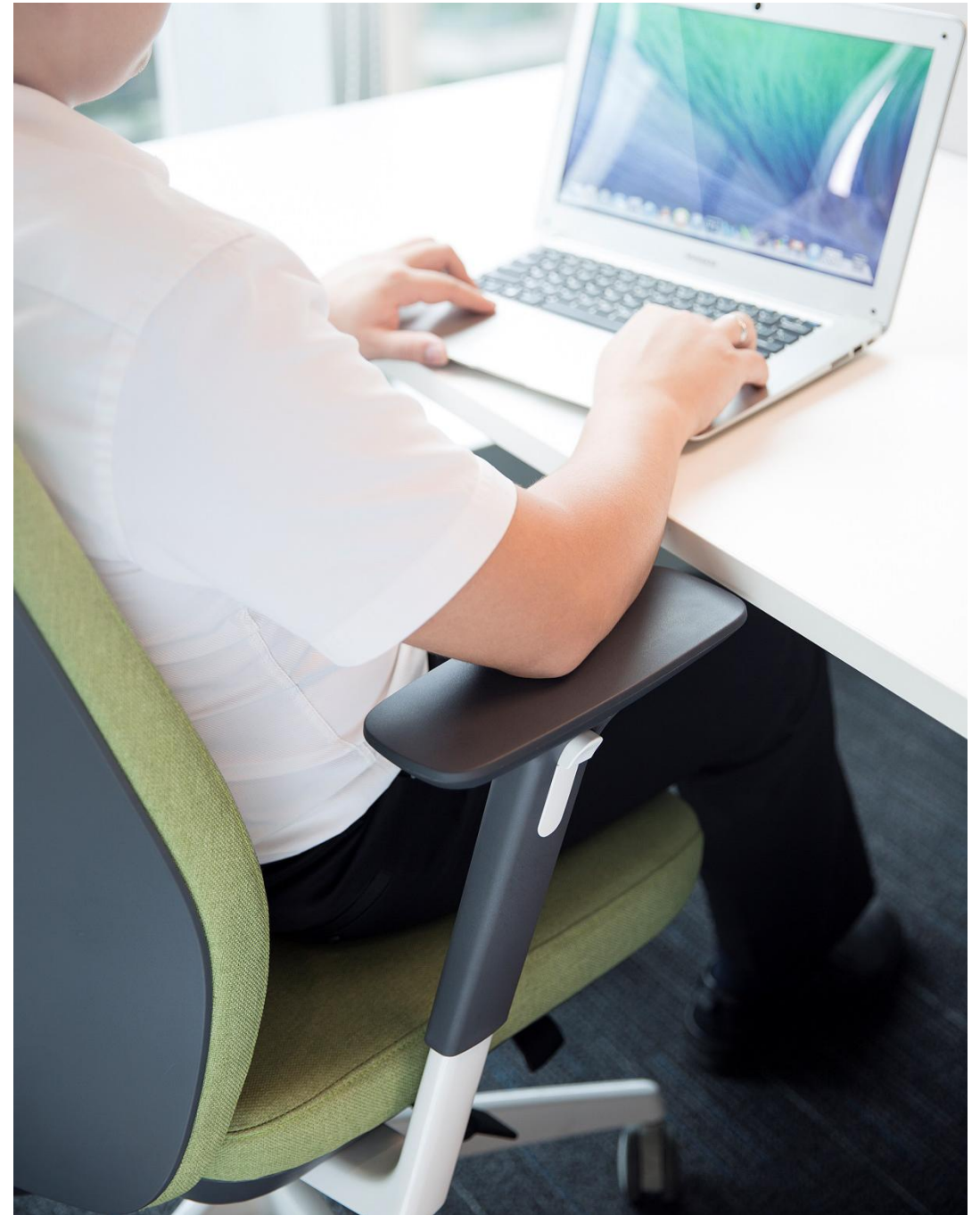
Arms move in three directions, letting you adjust their height, depth and width. Offers you relaxed gestures, Be Chair is perfect in every way.

- 9-position height adjustment (effective stroke:75mm)
- 7-position PU Pad forward and backward adjustment (effective stroke:40mm)
- 4-position PU Pad left and right adjustment (effective stroke:30mm)



Fits You

Lean in and find your most comfortable posture.



Colors

Shell

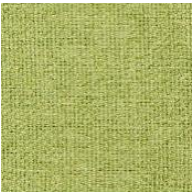


Grey



Black

Textile



FC1801/Green



FC1802/Light Grey



FC1901/Dark Grey



FC2001/Black

PU Leather



PU0401/Light Grey



PU0402/ Burgundy



PU0403/Black

Various Versions



D00318RMF
Black Shell



D00318RMF
Grey Shell



D00318RMP
Black Shell

Flexible Solutions-High Back

Armrest



Nylon Armrest/Grey & Black



Aluminum Armrest/White painting & Polished

Base



Nylon Base/Grey & Black



Aluminum Base/White painting & Polished



Fixed Aluminum Base/White painting & Polished

Mechanism

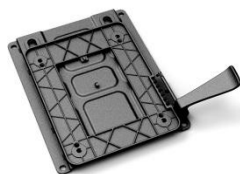


Synchron mechanism
22° back tilting angle
with 3 locking positions



DONATI-Dopo weight
sensitive mechanism,
21° back tilting angle
with 3 locking positions

Slider



6-position Seat Slider,
attachable to both
mechanisms

Option:



Synchron mechanism
22° tilting angle with 3
locking positions, plus 6-
position Seat Slider

Flexible Solutions-Mini Back

Armrest



Height adjustable
armrest/Nylon /Black



Fixed Armrest/
Aluminum/Black

Base



Nylon Base/Black



Nylon Base/Black/
Chrome Ring



Sled base/ Black coating &
Chrome

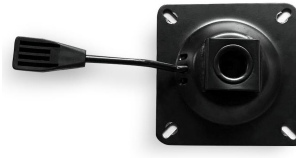
Mechanism



Simple mechanismNG022
21° back tilting at
original locking

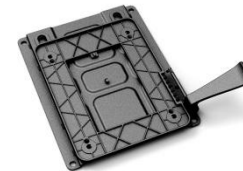


Simple mechanism012
22° back tilting angle
with 3 locking positions



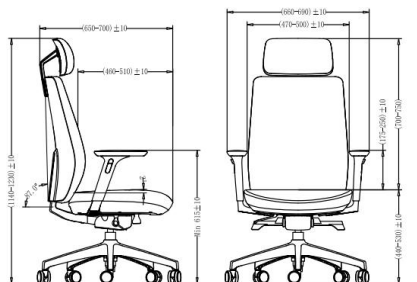
Simple mechanism034
no back tilting angle

Slider



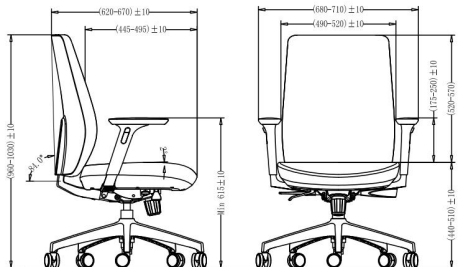
6-position Seat Slider,
attachable to the first
two mechanisms

Packing Details/ 尺寸与包装



D00318RHF

Carton Size: 32-1/2"L*15"W*26"H CBM:0.20
Packing: 1pcs per carton
N.W.: 22.2KG G.W.: 24.7KG
Loading:
20GP:148PCS//40GP:300PCS//40HQ:336PCS



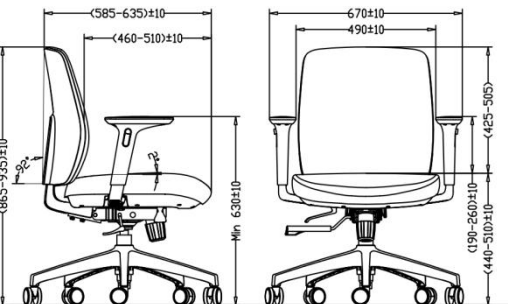
D00318SMF

Carton Size: 32-1/2"L*15"W*26"H CBM:0.20
Packing: 1pcs per carton
N.W.: 22.5KG G.W.: 25.2KG
Loading:
20GP:148PCS//40GP:300PCS//40HQ:336PCS



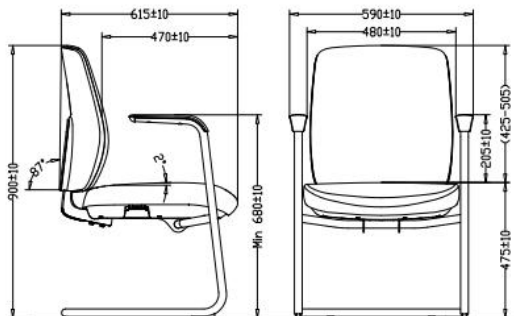
D00318RMF

Carton Size: 32-1/2"L*15"W*26"H CBM:0.20
Packing: 1pcs per carton
N.W.: 21.2KG G.W.: 23.9KG
Loading:
20GP:148PCS//40GP:300PCS//40HQ:336PCS



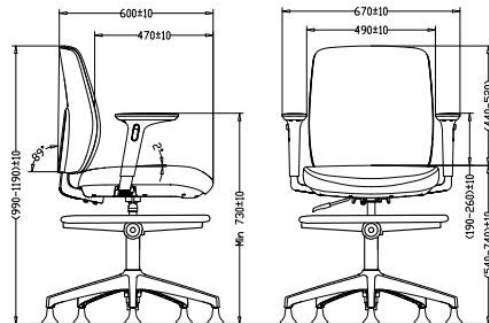
D00318JSF

Carton Size: 28-3/4"L*15"W*24-3/4"H CBM:0.16
Packing: 1pcs per carton
N.W.: 16.5KG G.W.: 19.2KG
Loading:
20GP:162PCS//40GP:342PCS//40HQ:399PCS



D00318EFF

Carton Size: 32"L*22-3/4"W*24-1/4"H CBM:0.28
Packing: 2pcs per carton
N.W.: 28.2KG G.W.: 32.2KG
Loading:
20GP:184PCS//40GP:374PCS//40HQ:456PCS



D00318TWF

Carton Size: 28-3/4"L*15"W*24-3/4"H CBM:0.16
Packing: 1pcs per carton
N.W.: 16KG G.W.: 18KG
Loading:
20GP:162PCS//40GP:342PCS//40HQ:399PCS

